

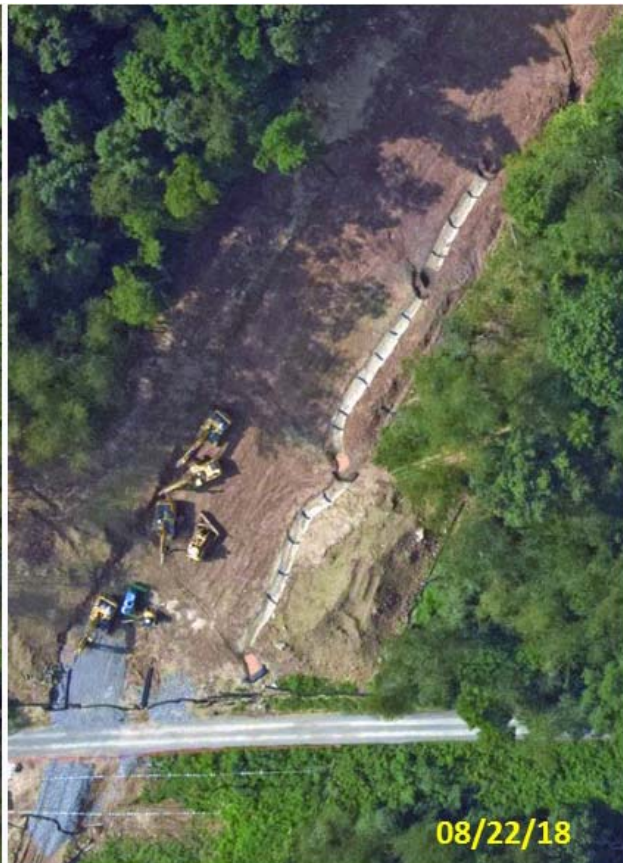
Non-Compliant Control Measures - 9/5/2018

Aerial photos of ACP construction obtained on 8/12/2018, 8/22/18, and 9/5/18 reveal a noncompliant runoff-control structure on a steep mountainside (>30% slope) to the north of Sand Fork in Lewis County. Water bars installed across the construction corridor were improperly built to convey runoff to a drainage ditch running straight down the mountainside. This structure was not compliant with erosion and sediment control requirements, and it was not depicted on construction plans approved by WV DEP and FERC.

A [Non-Compliance Report](#) was submitted by WV Rivers Coalition to WV DEP on 9/9/18. The following images were among those obtained in our investigation

- [Aerial photo](#) showing the non-compliant drainage ditch.
- [Construction alignment sheet](#) for location in question.
- [Failing runoff control structure](#) at the downslope end of the drainage ditch.

A [Weekly Summary Report](#) (posted on 9/7/18) indicates that this location was inspected by FERC Compliance Monitors on 8/14/18 and 8/16/18. The summary noted the presence of a non-functioning slope breaker (water bar) and a failed silt fence. No reference was made to the noncompliant downslope runoff ditch evident in CSI's aerial photos.



Pipeline Air Force photos